



## KNOWLEDGE BASE

Article Type: Instructions

### Tie Rod Dimensions on the 924, 1224, and 1624 Splitters

#### Description:

Instructions on “Tie Rod Dimensions on the 924, 1224, and 1624 Splitters

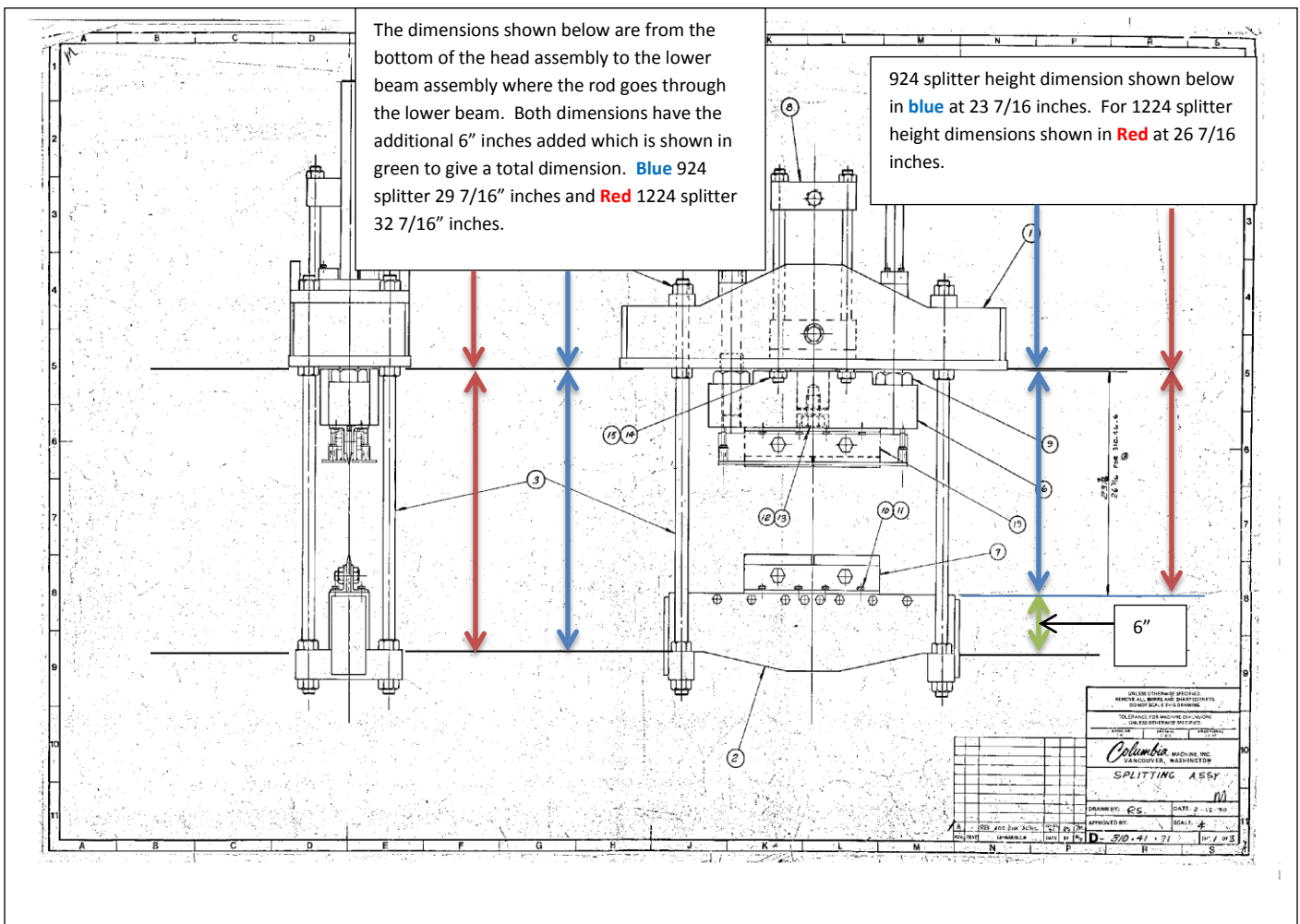
#### **WARNING**

Never work on, clean or service this unit, control panel or any machine or open or remove any protective cover, guard, grate, door, or maintenance panel until the power or energy sources has been turned off, locked out / tagged out, and all moving parts have come to a complete stop and or blocked to prevent movement. Machinery is dangerous - avoid personal injury and or death by following manufacture, Local, and OHSa safety procedures. Contact Columbia Machine for safety decals, guards, horns and beacons.

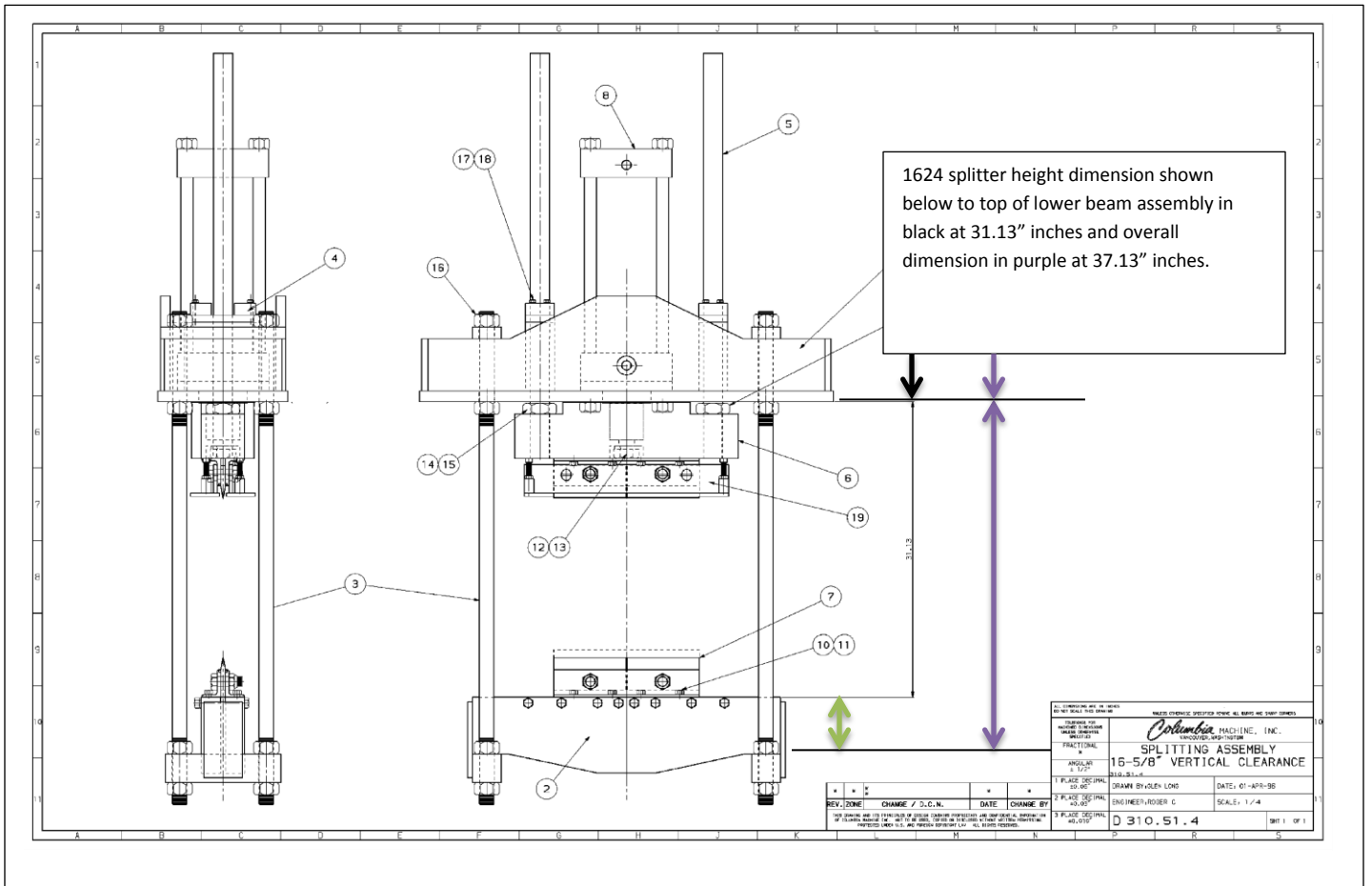
## TIE ROD DIMENSIONS for: 924, 1224 & 1624 SPLITTERS

Several dimensions can be checked to insure the splitter tie rods have been set correctly or to confirm dimensions in the event that someone has performed maintenance requiring the adjustments or replacement of the tie rods.

1. The **924 splitters** dimension check from the bottom of the head to the top surface of the lower beam assembly is set at  $23 \frac{7}{16}$ . If you are checking these dimensions from where the tie rod enters the head assembly and to the bottom beam assembly same you need to add an additional (6") inches which will give you an overall dimension of  $29 \frac{7}{16}$ " inches. (Please see print and dimensions below. Torque specs for upper and lower nuts set at 1200 ft. lbs. on all nuts
2. On **1224 splitters** dimension check from the bottom of the head to the top surface of the lower beam assembly is set at  $26 \frac{7}{16}$ . If you are checking these dimensions from where the tie rod enters the head assembly and to the bottom beam assembly same you need to add an additional (6") inches which will give you an overall dimension of  $32 \frac{7}{16}$ " inches. (Please see print and dimensions below.



- On 1624 splitters dimension check from the bottom of the head to the top surface of the lower beam assembly is set at 31.13" inches If you are checking these dimensions from where the tie rod enters the head assembly and to the bottom beam assembly same you need to add an additional (6") inches which will give you an overall dimension of 37.13" inches. (Please see print and dimensions below



If you need additional information regarding your splitter you may contact Columbia Machine Inc. CP Service Department for assistance 1-800-628-4065.