

We put Concrete into Shape

Concrete Products Machine RH 500



HESS Maschinenfabrik GmbH & Co. KG  
Freier-Grund-Straße 123  
D-57299 Burbach-Wahlbach · Germany

Phone: +49 (0) 2736 497-60  
Fax: +49 (0) 2736 497-620  
E-Mail: [info@hessgroup.com](mailto:info@hessgroup.com)  
Internet: [www.hessgroup.com](http://www.hessgroup.com)

With the reservation of technical modifications and as regards contents!  
The pictures on the preceding pages are partially without safety devices  
due to illustrational reasons!

rh500\_0407\_e\_1





# Concrete Products Machine RH 500

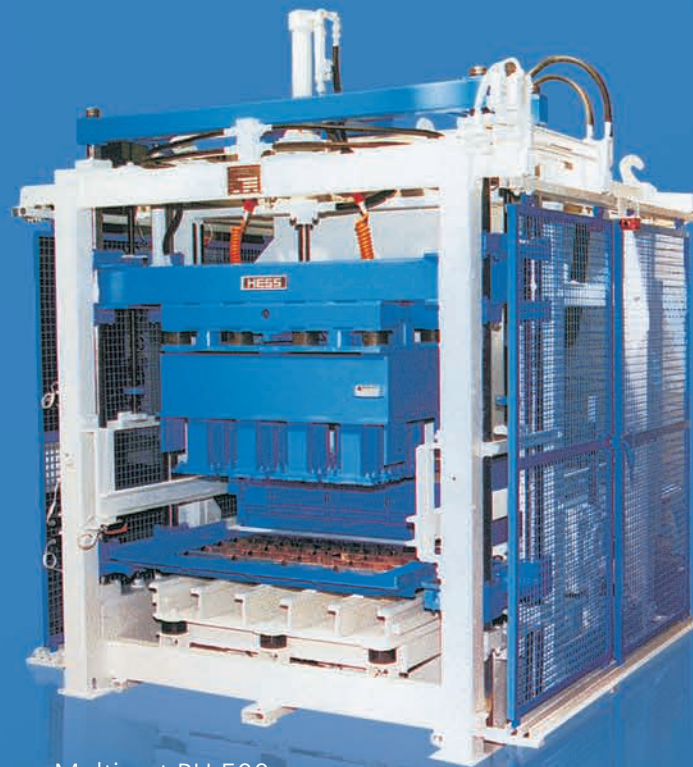


## The Multimat RH Series from HESS

All advancements in Research, Design and Manufacturing over the past 60 years have contributed to the development of this machine type.

### Multimat RH 500 - A Starter machine as a semi or fully automatic version

The Multimat RH 500 has a very compact structure. It is capable of producing Curbstones, Pavers, Hollow Blocks or similar concrete products in a semi-automatic or fully-automatic version.



Multimat RH 500

## Compact Structure – large production capability

The RH 500 has a heavy duty, compact structure with advanced Electronic, Pneumatic and Mechanical modules. It can produce Slabs, Pavers, Hollowblock and similar concrete products in moderate production output. With a production height from 50 – 300 Millimeters it offers a wide range of products.

The positive Height stop allows products to be produced to a specific, accurate height, such as Building Blocks.

## Technical Data:

- Production Boards: 1200x670mm (without legs), 1300x670mm (with legs)
- Production Area: 1100x620mm (without legs), 1100x620mm (with legs)
- Production Height: 50 – 300mm
- Up to date electrical control: SIEMENS S7
- Compact Hydraulic Powerpack
- Stone Height Control

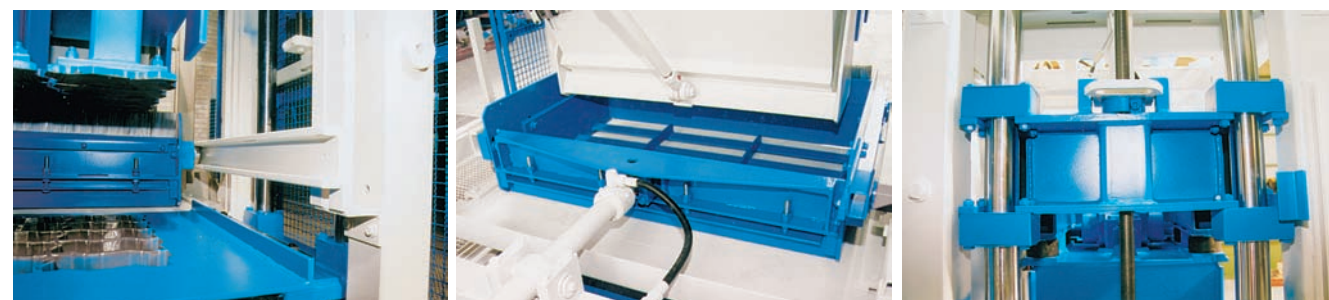
## Available with

- A semi or fully Automatic Version
- Facemix Application
- Frequency controlled Vibration System
- Further Options



RH 500 VA with Hydraulic Powerpack RH 500 VA Side View

Compact Hydraulic Powerpack



Heavy Duty Filler Box Rails

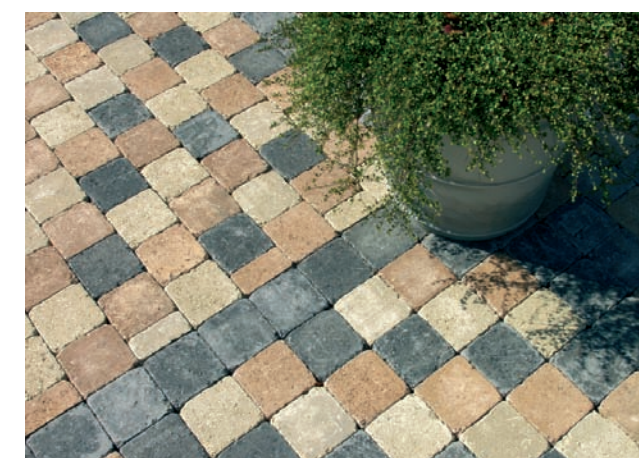
Hydraulically Powered Filler Box

Tammerhead Guides

## Production Data of the RH 500\*:

(\*) The given production data depends on mould shape, mould properties and production boards.

Type: RH 500-2 VA		Production Boards: 1200x670				Production Area: 1100x620	
Product	Size	Product height	Facemix	Volume Stones/Mould	cycle time/sek.	Production numbers 100% / 8h	Production sqm 100% / 8h
Paver	10 x 20 cm	6 cm	no	30	17	50.824	1.016
Paver	10 x 20 cm	6 cm	yes	30	20	43.200	864
Hollowblock	20 x 20 x 40 cm	20 cm		5	20	7.200	



## Available Models:

- Semi Automatic without Facemix (RH500-H)
- Semi Automatic with Facemix (RH 500-HV)
- Fully Automatic without Facemix (RH 500-A)
- Fully Automatic with Facemix (RH 500-VA)

